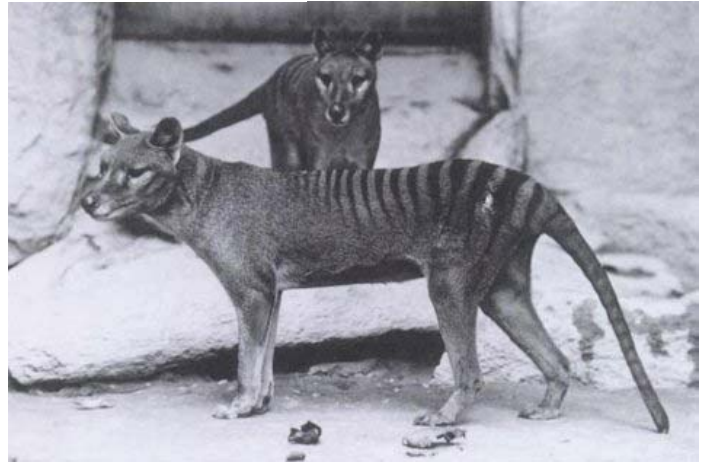


Aesthetics of extinction:
biodiversity loss, banal
violence and exuberant
presence

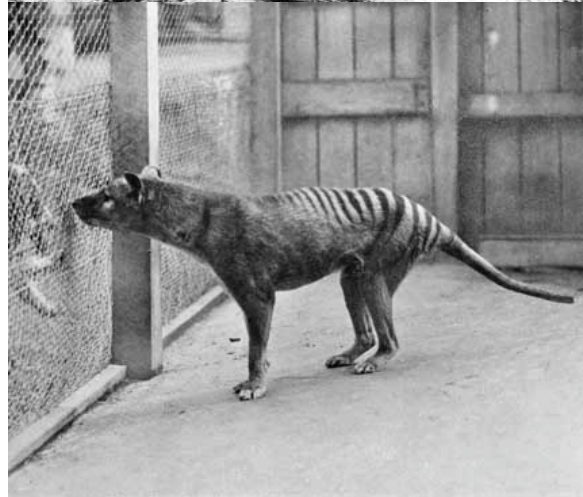
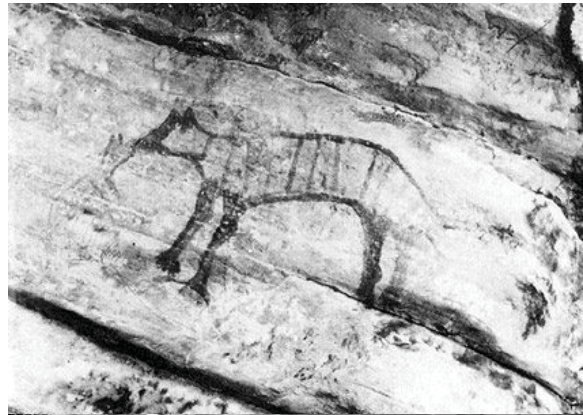


Dr Kathryn Yusoff, University of Exeter, UK

To grieve, and to make grief itself
into a resource for politics, is not
to be resigned to inaction, but it may
be understood as the slow process by
which we develop a point of
identification with suffering itself.

(Butler 2004, 30)

7 September 1936.




Animal cruelty shows itself in many ways.

Every 20th of abused children is hurt abuse animals. That's why when an RSPCA Inspector discovers a case of inhumane care and animal cruelty, they know it may not only be the case that needs help. Often the victims, without exception, are themselves being treated poorly and animal abuse is often abuse.

You need the RSPCA
The national animal welfare charity

RSPCA



ARKive | Images of life on Earth MyARKive 


Homepage > Search



ARKive Search

Species Movies Images All

[Tips on using our new search](#)




Species search results Results 1 - 2 for polar bear

 **Polar bear (*Ursus maritimus*)**
The polar bear is the largest living land carnivore in the world today with adult males growing up to 2.6 meters in length. The... [More](#)

 36 Images  20 Movies

Polar bear (*Ursus maritimus*)

[\[previous page \]](#) [\[next page \]](#) (movies 10 to 18 of 20)

Red List Home

- Search
- Expert Search
- Help Save Species
- Introduction
- Partners & Credits
- Red List Overview
- Data Organization
- Summary Statistics
- Sources & Quality
- Categories & Criteria
- Classification Schemes
- Photo Gallery
- References
- Publications & Links
- FAQs
- Feedback
- User Log In
- Sponsors



The IUCN Species Survival Commission

2007 IUCN Red List of Threatened Species™



Search

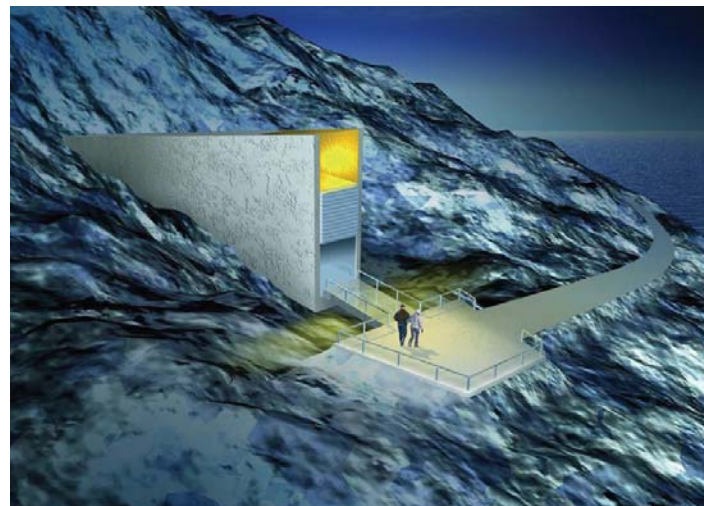
Help Save Species



What's new? Last updated on 10 January 2008.

© International Union for Conservation of Nature and Natural Resources

Contact Information



ARKive
IMAGES OF LIFE ON EARTH

Explore by species Explore by geography Species Video Images All Search...

Home > Fish > **Tasselled wobbegong**

Tasselled wobbegong (*Eucrossorhinus dasypogon*)

Species information

- Facts & Status >
- Description >
- Range & Habitat >
- Biology >
- Threats & Conservation >
- Find out more >
- Glossary & References >
- All >

See where it lives

Species related by

- Family group >
- Habitat >
- Conservation status >
- Link to this video >
- Email to a friend >
- Download video clip >

MYARKIVE

- Add to scrapbook
- Go to contact

ARKive | Images of life on Earth MyARKive 

Videos and 1 vi 17 ima

Homepage > Search

ARKive Search

Species **Movies** **Images** **All**

[Tips on using our new search](#)

Species search results Results 1 - 2 for polar bear

 **Polar bear** (*Ursus maritimus*)
The polar bear is the largest living land carnivore in the world today with adult males growing up to 2.6 meters in length. The... [More](#)

 36 Images  20 Movies





MOUNTAIN PYGMY POSSUM
VIC
ENDANGERED

VULNERABLE VULNERABLE VULNERABLE VULNERABLE
THREATENED ENDANGERED ENDANGERED ENDANGERED

Being noticed and putting in a good appearance...

THE REWILDING INSTITUTE

[Home](#) [About](#) [Species](#) [Extinctions](#) [Conservation](#) [EDGE Live](#) [Support](#)

Welcome to the EDGE

Top 100 EDGE Species

Conservation Focus

- Yangtze River dolphin
- Long-beaked echidna
- Hispaniolan solenodon
- Bactrian camel
- Pygmy hippopotamus
- Slender loris
- Hiroia
- Long-eared jerboa
- Golden rumped elephant-shrew
- Bumblebee bat

Southern marsupial mole EDGE rank 30 [About EDGE](#)

Species receiving attention

- No conservation attention
- Limited conservation attention
- Conservation underway

There's still time to save species on the EDGE

EDGE Species

EDGE species are truly remarkable and there will be nothing else like them receiving little or no conservation attention.

Greater short-tailed bat (*Mystacina robusta*)

Mystacinids, like the greater short-tailed bat, are amongst New Zealand's only native mammal species and are unique in their ability to fold away their wings beneath a leathery membrane when not in flight, and spend much of their time foraging on the ground.

More Information

EXTINCT

Image not available

Do you have an image of this species?
info@edgeofexistence.org

Support

Make an online donation now to save an EDGE species.

Conservation Attention



Giving an account of oneself...



Presence/absence
in representational orders



Image of an Animal to be Tracked and Background.

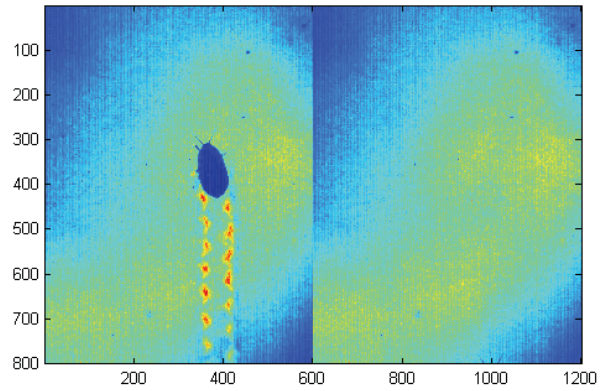


Figure 2.





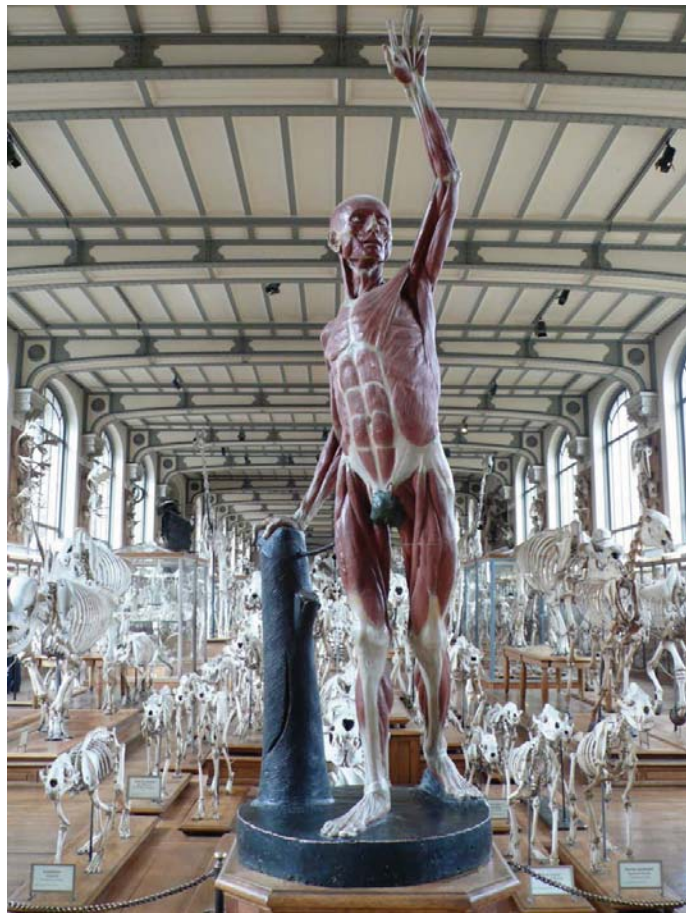
Subjects of the biosphere:

Relational and non-
relational *ties*



Orang Outan
Pithecia satyris L.
Regio cervicalis ant. et gland. sub.

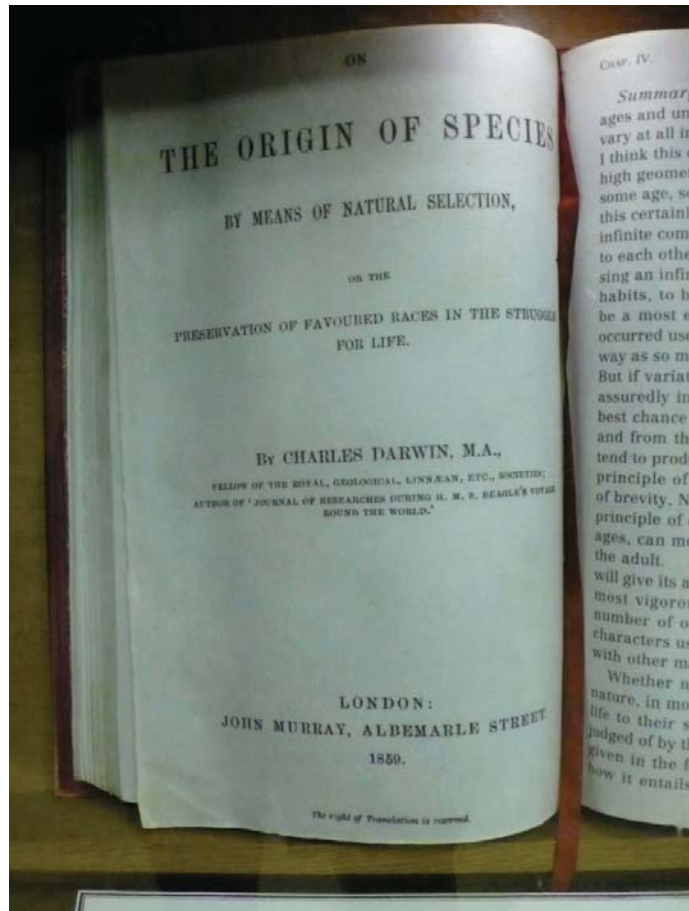
*Being a community with
something/nothing
in common*



Mourning



Narratives of extinction



Aesthetics and ethics of extinction

